

# Maritime Welding Inc.

FABRICATION & MACHINE SHOP

**PROVEN SERVICE  
TO INDUSTRY**



## Who We Are

Maritime Welding Inc., established in 1969, is a fully equipped metal fabricating shop staffed by a well trained flexible and knowledgeable workforce. Our shop located in Northern New Brunswick offers a full range of metal fabricating, assembly and machining services for a diverse group of industrial clients throughout the world.

With over thirty years of experience, Maritime Welding Inc. has developed world class technical skills in steel fabrication, and acquired specialized equipment to deliver the quality our clients in the mining, forestry, fishing, power utility, construction and petrochemical industries have come to expect.

Maritime Welding Inc.'s engineering department employ fully qualified engineering draftsman who, along with our team of fabricators take pride in the most detailed steel fabrication work and assure client specifications are met with exact standards.

Offering a full range of steel fabrication services to clients, our CWB certification and ISO 9001:2000 quality management system, allows us to do specialized work such as pollution control equipment, stainless steel products, electrostatic precipitators, a variety of tanks and other vessels fabricated from steel.

Our shop is state of the art and equipped with a computerized cutting table that works in conjunction with our cad system, a plate roller with an extra long 10' wide plate capacity, Mig and TiG welders and submerged arc welders capable of welding stainless steel and carbon steel.

Located near Port, Rail and Road transportation links, Maritime Welding Inc. can deliver world-class steel fabrication services worldwide.

I





## **MISSION STATEMENT**

Maritime Welding Inc. will be a leading steel fabricator serving an international market with proven quality workmanship.

We will maintain and enhance our position by providing:

- Superior service to our customers
- On time delivery
- Knowledgeable, dedicated people
- Continuous quality control programs
- State of the art technology and information
- Direct communication with our owner and manager
- Competitive prices

We will instill in our employees a sense of pride and commitment to be the best that they can be. With Teamwork and dedication we will always focus on fulfilling commitments to our customer.

## **QUALITY CERTIFICATIONS**

- ISO 9001:2000
- CSA W47.1 / W59

When applicable will follow the following standards (codes):

- CSA Z299.4
- ASME Section IX
- AWS Codes
- API-650 (Storage Tanks)

# PRODUCTS

## WELDING & FABRICATION

In over 30 years of business our fabrication shop in Bathurst, New Brunswick, Canada, has developed a close-knit team of custom steel fabricator specialists who are capable of any challenge. From your design and engineering drawings our team of draftsmen, purchasers, quality personnel, and shop foremen, guide a qualified, experienced and well equipped workforce, which includes full sandblasting and paint facilities.

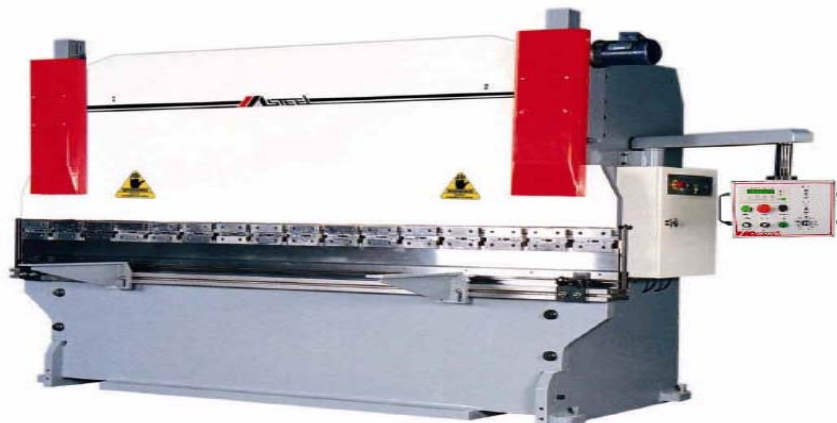
### CUTTING

- Multi-Torch cutting table 10' x 40'
- Oxyacetylene 8" thick
- Hypotherm HT4001 Plasma Arc Cutting System
  - Stainless Steel up to 2" thick
  - Mild Steel up to 1 1/4" thick
- Programmable controls (BOC/CAM)



### FORMING

- Forming presses up to 500 tons x 14' (CNC controlled)
- Forming rolls up to 3/4" x 10'
- Angle Roller 6x6x1/2", pipe 1"-6" and channel beam roller up to 12" high
- Punching Presses
- Notchers
- Bevellers





## ASSEMBLY

### Overhead cranes

- Height under hooks: 22'
- Lifting capacity up to 20 tons
- Yard lifting capacity 18 tons

### Surface Preparation

- Blasting Facility
- Heated paint shop
- 20' x 80' c/w 10 ton overhead crane

### Production Area

- 35, 000Sq.Ft.
- Door size: 21' wide x 16' high
- Outside storage: 5 acres

### Shipping Facility

- Rail, boat, and truck access



## **MACHINING**

Maritime Welding maintains a fully equipped machine shop, including lathes, milling machine, a radial Press with a 3 ft. capacity, a shop press capacity up to 100 tons and a vertical boring mill with 58' swing. While the machine shop supports and compliments our full service fabrication facilities, Maritime Welding Inc. is capable of offering custom machining services to small, medium and large industrial customers.

### **Maximum Component Weight**

- 5 TONS

### **Machining Tools**

- Lathes: 14" diameter x 13' long capacity
- Boring mill with X and Y plane traverse: 58" swing x 42" high
- Multi spindle and bench drilling machines
- Horizontal milling machines c/w turret head
- 100 ton vertical floor press



# PROJECTS

## **Voisey's Bay**

This project consisted of manufacturing two dozen flotation cells for the massive Voisey's Bay mining Project in Labrador.



- Grinding, Concentrator and Powerhouse Building at Voisey's Bay site



- Flotation Cell Unit on Crane



- Installed Flotation Cell Units





• Flotation cell in paint process



• Flotation cell before paint finishing

• Flotation cells ready for shipping



• Flotation cells onboard ship



## Coleson Cove / Roxboro

This project consisted of manufacturing sections of Flue Gas Desulphurization (FGD) units which are the latest in pollution control technology for the Babcock and Wilcox Company. These units were Manufactures using S32205 Duplex stainless steel.

Photos below show fit up of the hood and elbow sections.



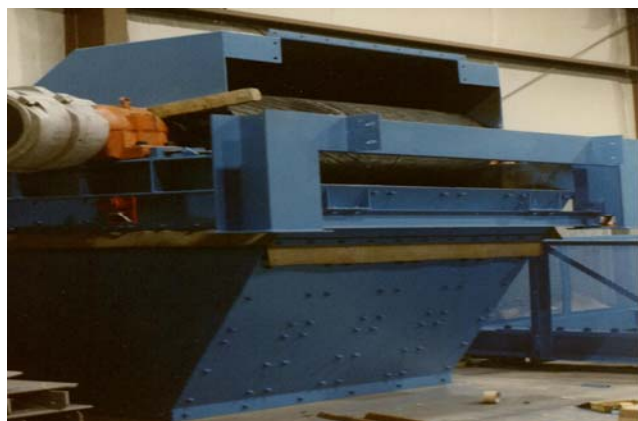
## Miscellaneous Projects



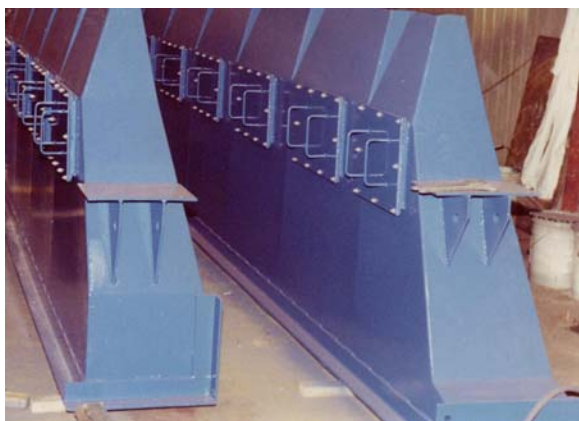
• *Brunswick Mine – Apron Feeder*



• *Valdor Gold Mine – Conveyor sys. (1)*



• *Valdor Gold Mine – Conveyor sys. (2)*



• *Valdor Gold Mine – Conveyor sys. (3)*



• *Valdor Gold Mine – Conveyor sys. (4)*

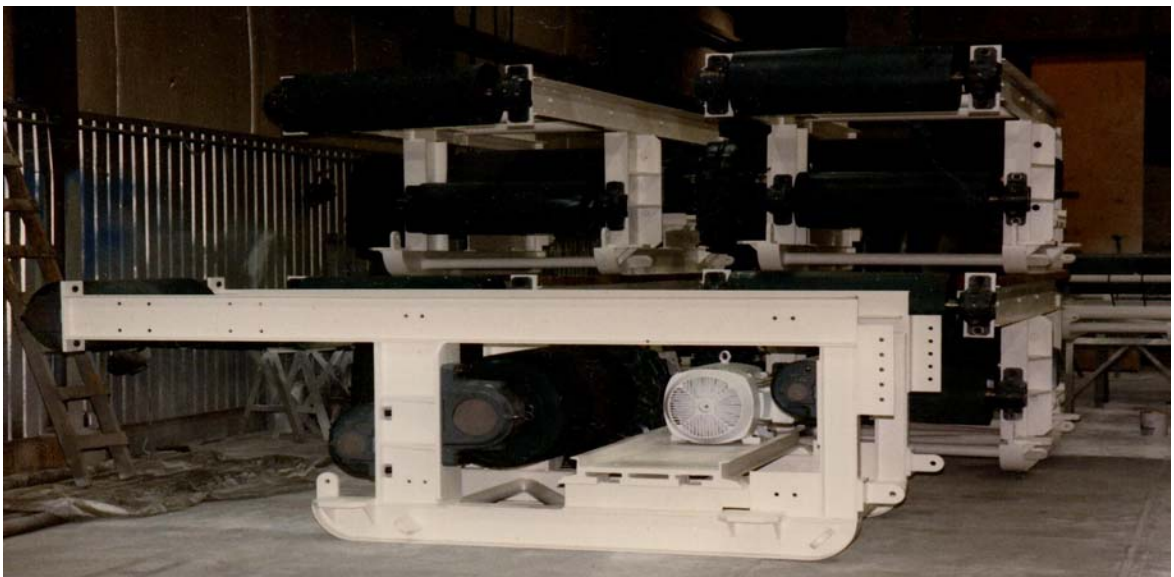




• Potash Corporation of Saskatchewan – Underground Conveyor sys. (1)



• Potash Corporation of Saskatchewan – Underground Conveyor sys. (2)



• Potash Corporation of Saskatchewan – Underground Conveyor sys. (3)





• *Brunswick Smelter – Storage Tank*



• *NB Power Corporation (Belledune) – Hoppers for Electrostatic Precipitators*



• **NB Power Corporation (Belledune) – Hoppers for Electrostatic Precipitators - Shipping**

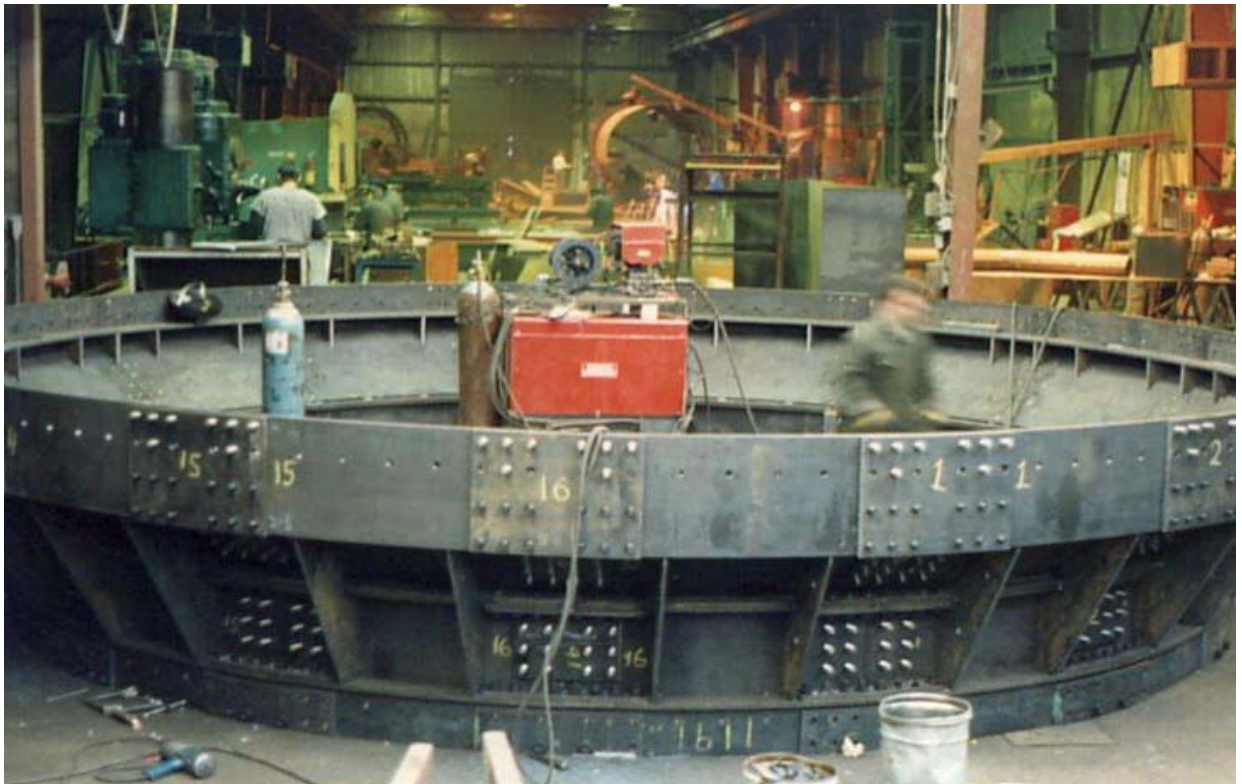


• **Brunswick Mining & Smelting – Flotation Cells**





• *Brunswick Mining & Smelting – Flotation Cells*



• *Brunswick Mining & Smelting – Bore Hole Liner*





• *Nova Gold - Lime Silo*



• *NB Power Corporation (Belledune) – Insulation Boxes for Electrostatic Precipitators*



• *Brunswick Mining & Smelting – Water Treatment Plant Lime Silo*



• *Brunswick Mining & Smelting – Sinter Hood*





• *Irving Oil Limited – Insulated Stack*



• *Irving Oil Limited – Insulated Stack*





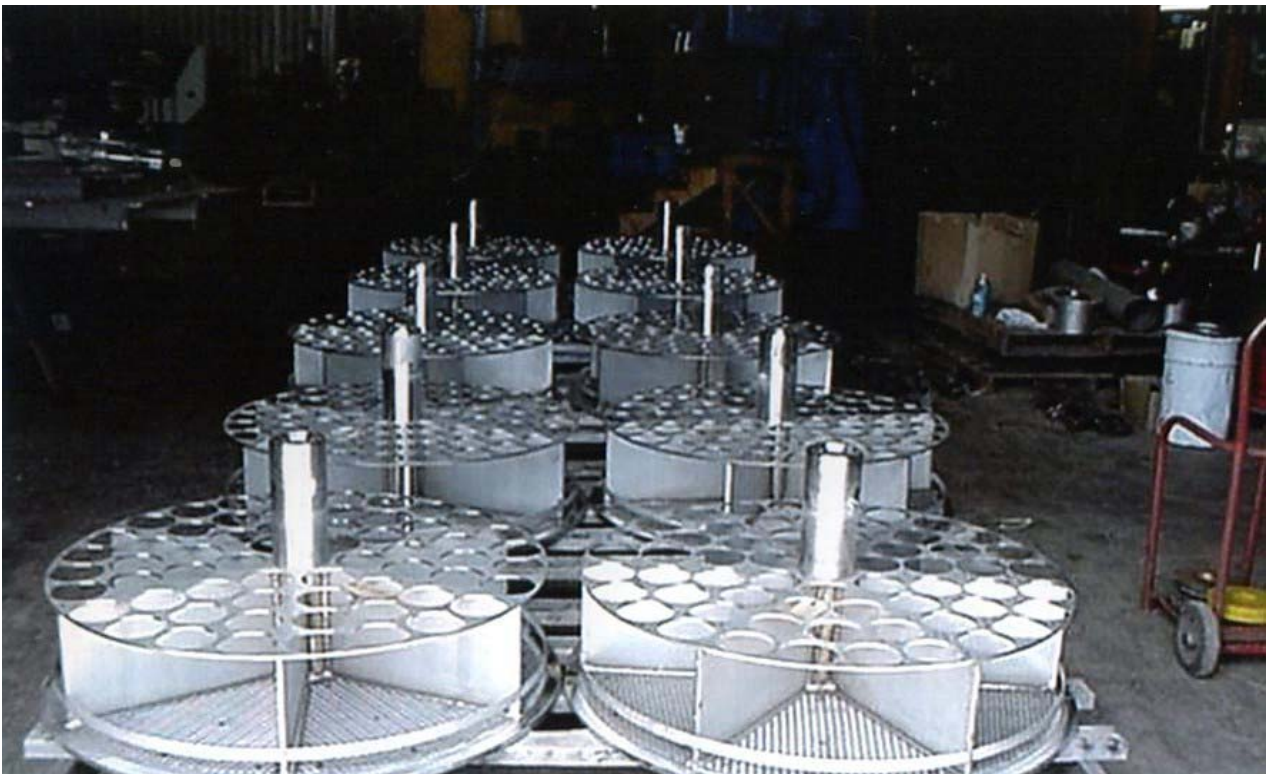
• *DB Riley – Insulated Duct Work*



• *Hammond Research - Reactor*

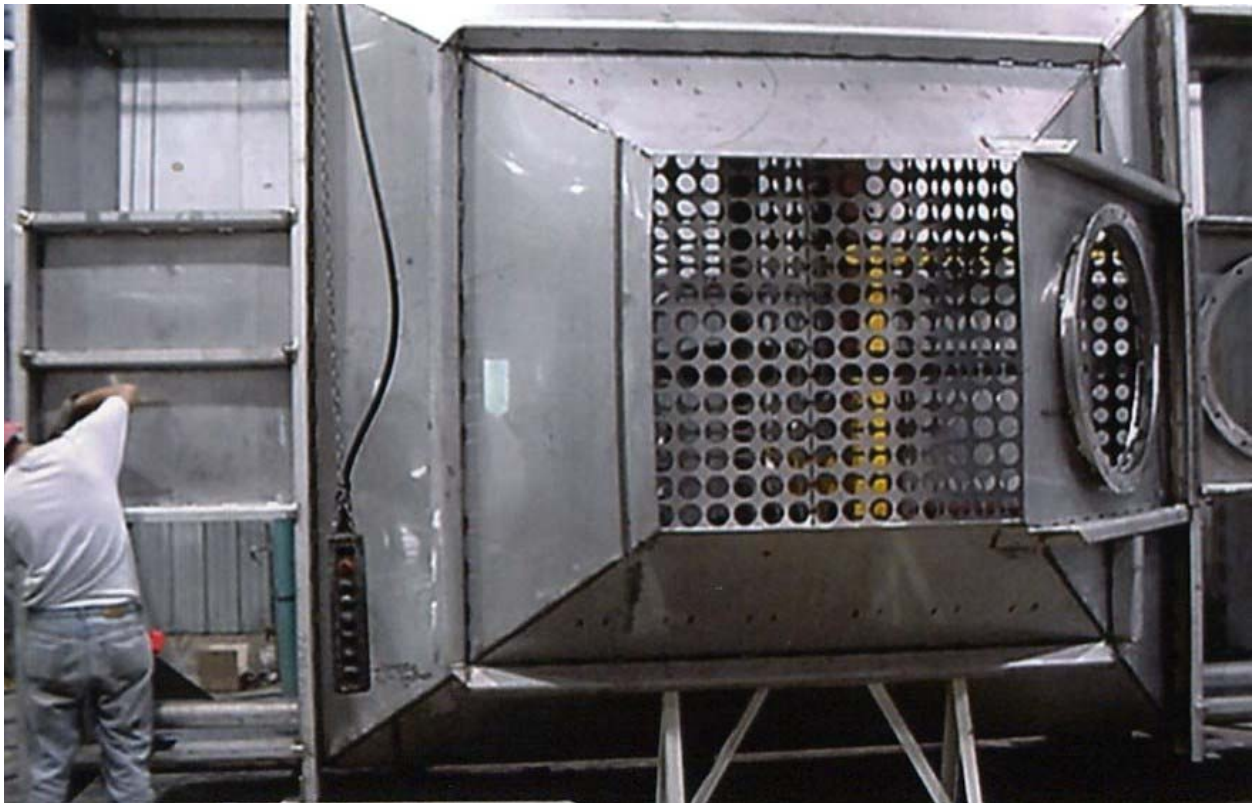


• NB Power Corporation (Point Lepreau) – Storage Baskets



• NB Power Corporation (Point Lepreau) – Storage Baskets





• *Environmental Elements – WESP*

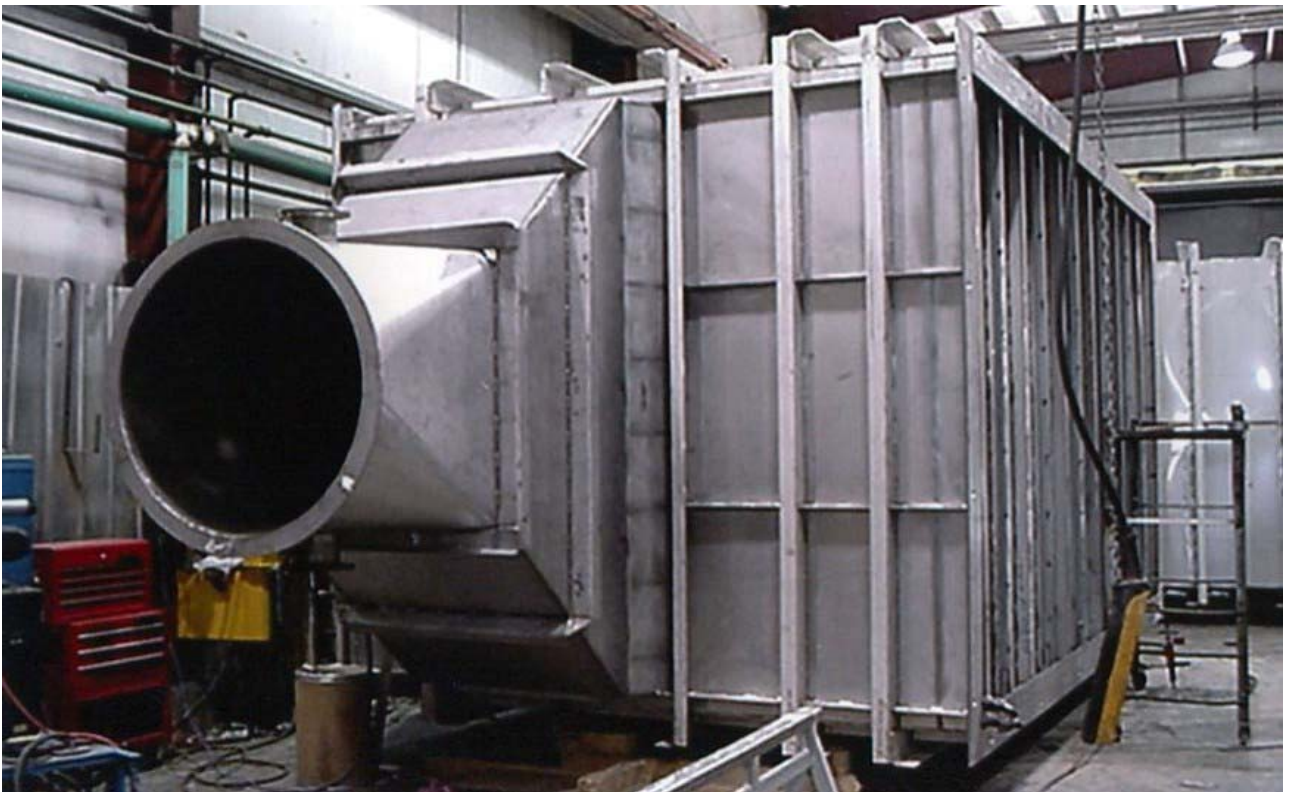


• *Environmental Elements – WESP*





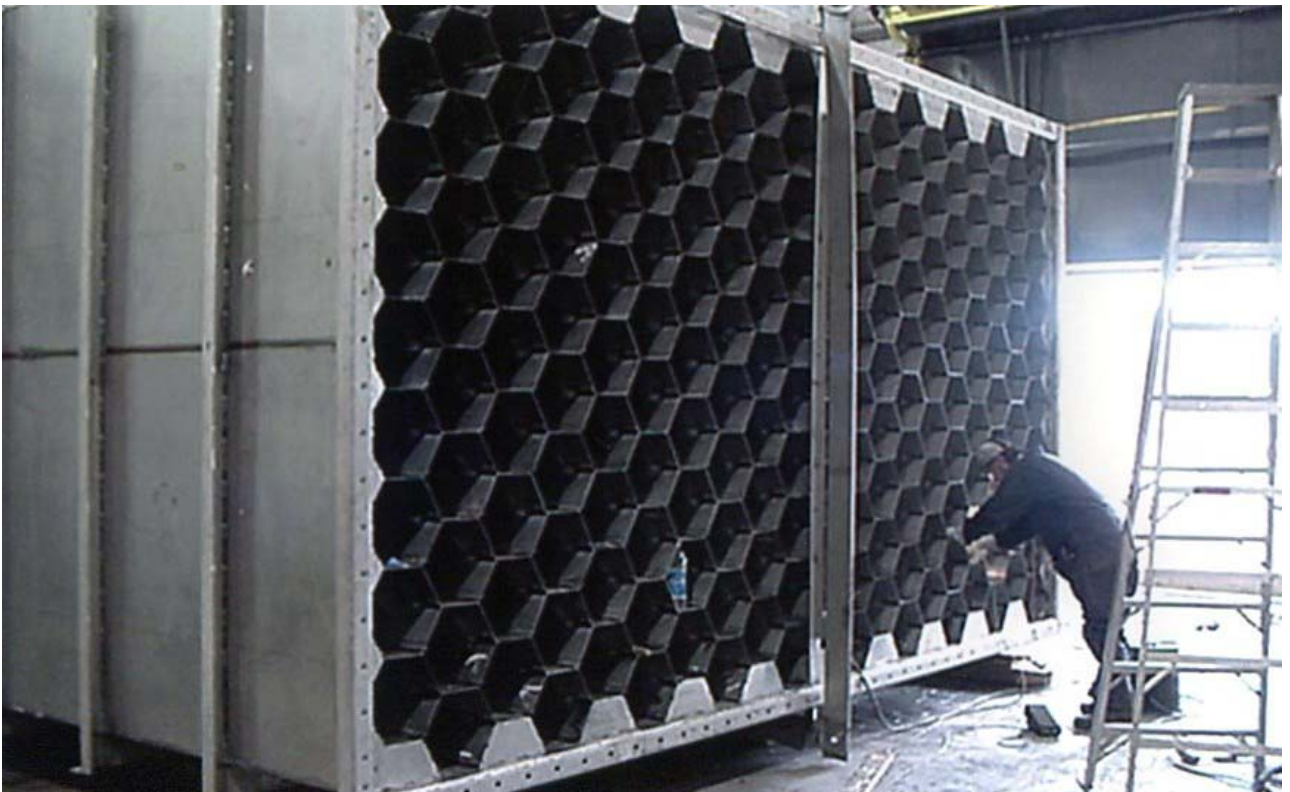
• *Environmental Elements – WESP*



• *Environmental Elements – WESP*



• *Environmental Elements – WESP*



• *Environmental Elements – WESP – Stainless Steel & Alloy Steel*





• *Voisey's Bay – Floatation Cells*



• *Voisey's Bay – Floatation Cells*





• Voisey's Bay – Flotation Cells



• Voisey's Bay – Flotation Cells





• **Voisey's Bay – Flotation Cells**



• **Voisey's Bay – Side Launder**





• *Voisey's Bay – Floatation Cells*



• *Voisey's Bay – Floatation Cells*





• ***Voisey's Bay – Mechanical Support mounted on top of Flotation Cells***



• ***Voisey's Bay – Flotation Cells***





• *Voisey's Bay – Flotation Cells*



• *Voisey's Bay – Flotation Cells*





• ***Voisey's Bay – Side Launderers***